

CEMENT MILL SHELL CRACK RECONDITIONING

APPLICATION- Cement Mill Shell Crack Reconditioning

Crack Details:

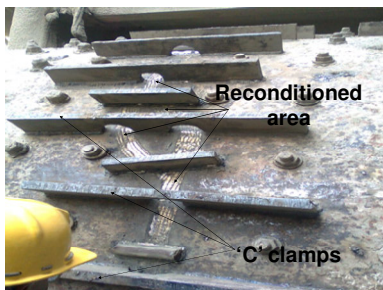
- Through Crack Generated with the length of 5 meters circumferentially in different places nearer to diaphragm.
- Shell Thickness is 50 mm.

Cement Mill Details:

- Cement Mill Capacity is 80 TPH
- Mill Type is Ball mill
- Mill Length is 16.035meters and Dia is 3.4meters
- Base Material is Cast Steel

Core Activity

- 'C' clamps were welded horizontally along the crack to maintain the alignment.
- V groove formation with gouging electrodes
- Surface preparation by grinding.
- Pre heated the surface area slowly up to 200°C and maintained temperature till completing metal build up.
- Root run of Diffusaloy 800 ELH has been Given.
- Superaloy 1770 is used for metal build up .
- After completion of build up the reconditioned area reinforced with ribs(ø40*200mm size rods).
- After completion of above process, the reconditioned area is posts heated to 550°C and allow to cooled down slowly for stress relieving.



Total Material Consumption : Super gouge - 100 Kgs
 Diffusaloy 800ELH - 30 Kgs
 Superaloy 1770 - 100 Kgs

Since last 10 months the repaired crack is found intact. We have got performance certificate for same.

DIFFUSION ENGINEERS LIMITED

Email : info@diffusionengineers.com Website : www.diffusionengineers.com

Branch Offices : Chennai, Faridabad, Jamshedpur, Pune, Raipur, Secunderabad, Vadodara.