

CHROMADUR (Wear Plate)

Characteristics:

CHROMADUR is a wear plate, which contains a high C-Cr alloyed stainless weld metal with excellent resistance to abrasion. It can be used whenever high abrasion accompanied by corrosion is expected.

Best results are achieved by double layer wear plate.

Applications:

Pumps, Impeller screws, Track hoppers, Bucket teeth.

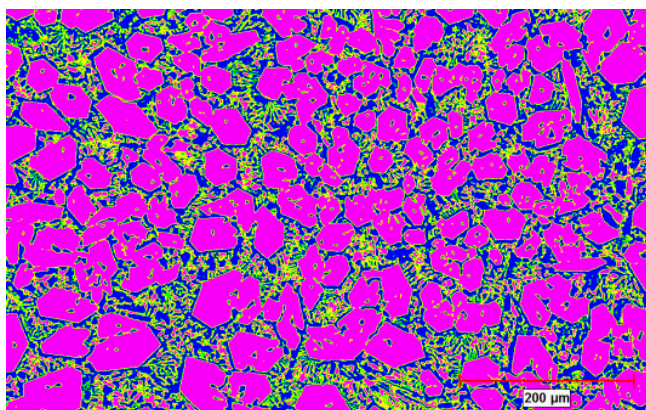
Hardness:

OVERLAY THICKNESS	HARDNESS IN RC
4.00 mm	57 – 60
8.00 mm	59 – 63

Major alloying elements:

C	Si	Cr
---	----	----

Typical Image Analysis Report Of DIFFUSION CHROMADUR:



Remarks: Microstructure shows the Primary Chromium Carbides and Eutectic Carbides along with Austenite and Martensite

DIFFUSION ENGINEERS LIMITED

Regd. Office & Works I : T-5/6, M.I.D.C, Hingna Industrial Area, Nagpur-440 016, (T) 091-7104-232084, 234727 (F) 232085

Works II : N-78/79, MIDC, Hingna Industrial Area, Nagpur – 440 016. (T) 091-7104-236036

Works III : T-12, MIDC, Hingna Industrial Area, Nagpur – 440 016.(T) 091-7104-232984

Email : info@diffusionengineers.com Website : www.diffusionengineers.com

Branch Offices : Chennai, Faridabad, Jamshedpur, Pune, Raipur, Secunderabad, Vadodara.