

## COLMODUR HT (Wear Plate)

### Characteristics:

COLMODUR HT is highly alloyed C-Cr-Mo-Nb-W-V tubular wire gives weld deposit of extremely hard carbides. It is used for hardfacing and the weld metal has excellent abrasion resistance at high temperature. Weld deposit performs extremely well against strong mineral wear. The weld deposit retains its wear resistance up to 650<sup>0</sup>C. The product has been tested to provide good results on high temperature erosion tester upto 600<sup>0</sup> C.

Best results are achieved by welding in two layers.

### Applications:

Blast – furnace bells, fire grates, crusher, sinter wheel breakers, smelter loading chutes, etc.

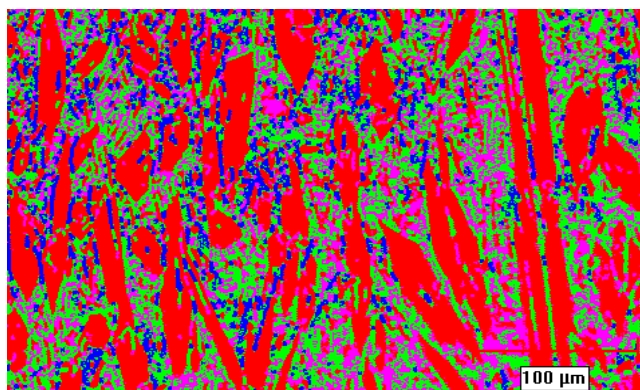
### Hardness:

OVERLAY THICKNESS	HARDNESS IN RC
4.00 mm	59 – 63
8.00 mm	62 – 65

### Major Alloying Elements:

C	Cr	Mo	Nb	V	W
---	----	----	----	---	---

### Typical Image Analysis Report Of DIFFUSION COLMODUR HT:



**Remark:** Microstructure shows Primary Chromium Carbide, Niobium Carbide, Complex Molybdenum, Tungsten Carbide and Eutectic Carbide along with Austenite and Martensite.

## DIFFUSION ENGINEERS LIMITED

Regd. Office & Works I : T-5/6, M.I.D.C, Hingna Industrial Area, Nagpur-440 016, (T) 091-7104-232084, 234727 (F) 232085

Works II : N-78/79, MIDC, Hingna Industrial Area, Nagpur – 440 016. (T) 091-7104-236036

Works II : T-12, MIDC, Hingna Industrial Area, Nagpur – 440 016.(T) 091-7104-232984

Email : info@diffusionengineers.com Website : www.diffusionengineers.com

Branch Offices : Chennai, Faridabad, Jamshedpur, Pune, Raipur, Secunderabad, Vadodara.